

HERBERT F. JOHNSON
MUSEUM OF ART

Annual Report

2021–2022



Contents



The conference “Rhythms of the Land: Indigenous Knowledge, Science, and Thriving Together in a Changing Climate” was organized by Karim-Aly Kassam, American Indian and Indigenous Studies Program, and held in conjunction with the exhibition *Art and Environmental Struggle*.

The Johnson Museum of Art greatly values the support of its donors. Every attempt was made here to produce a complete and accurate report.

In the event of an error or omission, please contact Courtney Campbell, Director of Development, at ccn44@cornell.edu.

Thank you!

Cornell University is located on the traditional homelands of the Gayogohó:nq' (the Cayuga Nation). The Gayogohó:nq' are members of the Haudenosaunee Confederacy, an alliance of six sovereign nations with a historic and contemporary presence on this land. The confederacy precedes the establishment of Cornell University, New York state and the United States of America. We acknowledge the painful history of Gayogohó:nq' dispossession, and honor the ongoing connection of Gayogohó:nq' people, past and present, to these lands and waters.

This land acknowledgment has been reviewed and approved by the traditional Gayogohó:nq' leadership.

3	From the Director Museum Advisory Council
4	Selected acquisitions
12	Exhibitions
13	Program highlights
14	University partnerships
19	Teaching partnerships
20	School and community partnerships
21	Interns
22	Student engagement
23	Loans from the collection
26	Works conserved
28	Collections support
30	Foundation, government, and corporation support
31	Financial statements
33	Staff
34	Members and special gifts
39	The Cayuga Society
41	Named endowment funds
42	Credits

From the Director

On August 26, 2021, the Johnson Museum of Art fully reopened our galleries and public spaces to all visitors. Despite the ongoing challenges posed by the Covid-19 pandemic, the year that followed represented a return to the strength and optimism found in bringing art and people together.

Significant capital improvements preserved the strength of I. M. Pei's vision for the study, display, and care of original works of art. Our original study gallery was fully renovated thanks to the generosity of Deborah Goodman Davis '85 and Gerald Davis '84, opening for classes in Spring 2022. A university-funded project to improve our roofing, drains, and piping took place out of the public eye during the spring and summer of 2021. Richard McElhiney Architects LLC, who have worked on projects across campus, treated the Mallin Sculpture Court like artwork being conserved, using original tiles kept in storage since the 1970s and matching the distinctive buff concrete that needed to be replaced.

Optimism was high as we celebrated generous new gifts to support two key staff positions. Dr. Judith Stoikov '63 endowed the Judith H. Stoikov Curator of Asian Art position, establishing the largest endowed position at the Museum to date—an indelible mark of Judith's dedicated support over two decades to our collection of Asian art. Moira Hintsas '74, husband Mark Hintsas, and sons Matt '10 and Mikey '15 endowed the position of Hintsas Family Manager of School and Family Programs, an extraordinary gift to our K-12 outreach program, which serves thousands of local and regional schoolchildren every year. Moira and her family have held strong ties to Cornell since her father, William Hearne, graduated with an engineering degree in 1924; her mother, Sheila Hearne, was a longtime friend of the Johnson Museum, and her legacy inspired this gift.

In close partnership with our supporters, the creativity, flexibility, and essential contributions of our staff, as seen across the Museum and throughout in these pages, supports and advances our mission both on campus and in our community.

Jessica Levin Martinez
Richard J. Schwartz Director

Museum Advisory Council

Executive committee

Gary Davis, *chair*
Susan Lynch, *vice chair/development chair*

Rona Hollander Citrin, *nominations chair*
Moira Hearne Hintsas, *communications chair*
Joel Mallin, *finance chair*
Judith Stoikov, *collections chair*
Beth Treadway, *education chair*

Members

Ellen Adelson	Melissa Russell Rubel
Lisa Baker	Nancy Schaenen
Katie Bartels	Nelson Schaenen, Jr.
Madeleine Bennett	James Siena
Janet Bishop	Marlene Siff
Deborah Goodman Davis	Betty Ann Besch Solinger [†]
Merry Foresta	C. Evan Stewart
Andy Grundberg	Genevieve Tucker
Alan B. Harris	Andrea Gottlieb Vizcarrondo
Elizabeth H. Harris	Carolyn Wiener
Alex Ho	
Michael Jacobs	<i>Emeritus Members</i>
Younghee Kim-Wait	Ira and Gale Drukier
R. Alexander Latella	Kenneth and Jill [†] Iscol
Jeffrey Libshutz	Dorothy Litwin
Sherry Mallin	Patricia Carry Stewart
Nancy Meinig	Harold Tanner
Evalyn Edwards Milman	
Donald C. Opatrny	
Judith T. Opatrny	

[†] deceased

Selected acquisitions



Hugh Steers

American, 1962–1995

Title unknown

Oil on gessoed paper

25 × 22 1/2 inches (63.5 × 57.2 cm)

Acquired through the John H. Burris, Class of 1954, Fund, and
through the David Findlay, Jr., Class of 1955, MBS 1957, Fund
2021.020

Selected acquisitions



Mariana Yampolsky
Mexican, born in the United States, 1925–2002
Caricia, 1989
Gelatin silver print
Image: 13 5/8 × 18 3/8 inches (34.6 × 46.7 cm);
Sheet: approx. 16 × 20 inches (40.6 × 50.8 cm)
Gift of Sandra Berler, and David K. Berler, Class of 1955, MD 1958
2021.028.034

Selected acquisitions



Ming Smith

American, born 1947 in Detroit, active in New York City

The Black Jewels of the USA II, from the series *Invisible Man*, 1991

Gelatin silver print

Image (slightly irregular): 4 7/16 × 6 1/8 inches (11.3 × 15.6 cm);

Sheet: 8 × 9 15/16 inches (20.3 × 25.2 cm)

Acquired through the generosity of the

Friends of Photography Acquisition Committee

2021.032

Selected acquisitions



Takumi Kama

Japanese, born 1985

Rock Eagle Owl's Drawer, 2018

Acrylic on canvas, mounted to board

46 × 36 1/16 inches (116.8 × 91.6 cm)

Gift of Alexander Ho, Class of 1996, Bong Lee, and Alex Lin

2021.034

Selected acquisitions



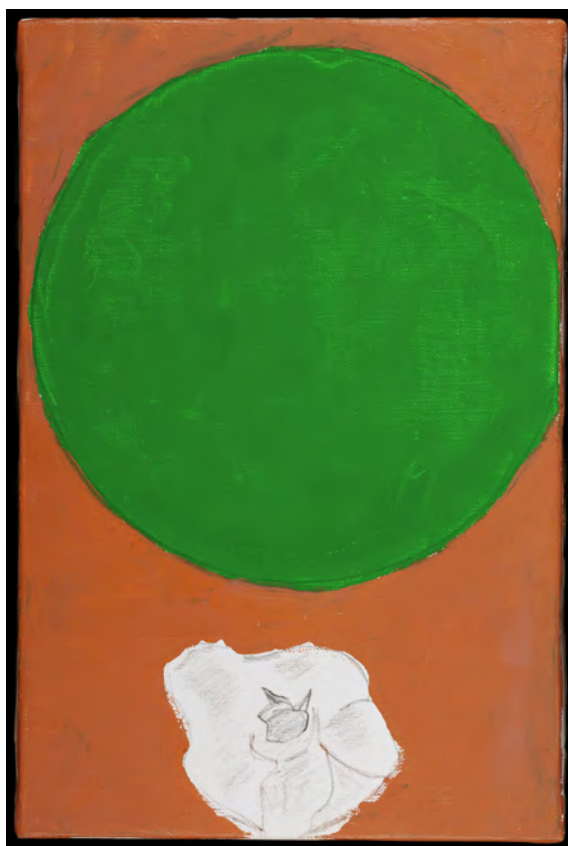
Jean-Marc Nattier
French, 1685–1766
Portrait of Marguerite Fyot de la Marche (Mme. de Paulmy),
ca. 1750
Oil on canvas
32 1/4 x 25 3/4 inches (81.9 x 65.4 cm)
Gift of Alan B. Harris, Class of 1953, and Elizabeth Heekin Harris
2021.053

Selected acquisitions



Mary Lee Bendolph
American, born 1935
Bricklayer pattern quilt, 1979–80
Corduroy
Approx. 90 × 84 inches (228.6 × 213.4 cm)
Acquired through the Nancy Horton Bartels, Class of 1948,
Endowment
2021.055

Selected acquisitions



Etel Adnan
American, born Lebanon, 1925–2021
Planète 8, 2019
Oil on canvas
12 15/16 × 8 11/16 inches (32.9 × 22.1 cm)
Acquired through the Jarett F. Wait, Class of
1980, and Younghee Kim-Wait Endowment for
Contemporary Islamic and Middle Eastern
Arts, and through the John H. Burris,
Class of 1954, Fund
2022.001

Selected acquisitions



Hayden Haynes
Onödowa'ga:' (Seneca), Deer Clan
A Message from Our Ancestors, 2021
Various antler (whitetail deer, moose, and elk) and trade beads
Length: approx. 20 inches (50.8 cm)
Acquired through the Herbert F. Johnson, Class of 1922, Endowment
2022.011

Exhibitions

Art and Environmental Struggle
August 26–December 14, 2021

*Faces of Change: Portraits of
Myanmar's Democratic Awakening*
August 31–September 26, 2021

Visions of Dante
September 14–December 14, 2021

Women Making Their Mark
September 18–December 14, 2021

Cornell Art Faculty 2022
February 5–May 8, 2022

Seymour Lipton II
February 5–July 31, 2022

*Berenice Abbott:
Portraits of Women, 1925–1930*
February 5–July 31, 2022

*Resistance Is Personal:
The Photobook as Protest*
February 5–July 31, 2022

*Taking Shape: Abstraction from the
Arab World, 1950s–1980s*
February 12–June 12, 2022

*Powering Exchange:
Teaching Objects in Transformation*
February 12–August 21, 2022

*Celebrating the Class of 1962
Fund for Photography*
May 21–August 14, 2022

*From the Collection: Alan Saret '66,
Gordon Matta-Clark '68, and
Louise Lawler '69*
May 28–August 21, 2022



“Visions of Dante: A Central NY Humanities Corridor Symposium” at Cornell explored the exhibition cocurated by the Museum’s Andrew Weislogel and the Library’s Laurent Ferri; with presentations by Rhoda Eitel Porter, *Print Quarterly*; Natale Vacalebre, University of Pennsylvania; artist Sadow Birk; and Maryemma Graham, University of Kansas; and the participation of Iftikhar Dadi, Department of the History of Art and Visual Studies; Tamar Evangelestia-Dougherty, Cornell University Library; and Alessandra Baroni Vannucci and Donatella Stocchi-Perucchio, University of Rochester. A virtual presentation was provided by eCornell.

Program highlights

Fall 2021

Cornell Department of Art

"Sound, Structure, and Site" with artists Mendi and Keith Obadike; cosponsored with the Rose Goldsen Lecture Series

Cornell Department of Music

"Cornell ReSounds Festival" with a performance by Lucy Fitz Gibbon and Mike Drop Duo (Michael Compitello and Mike Truesdell); and installations and kinetic sculptures by Marianthi Papalexandri-Alexandri and Pe Lang

Siren—Listening to Another Species on Earth by Annie Lewandowski, Kyle McDonald, and Amy Rubin (on view September 23–26), in conjunction with *The Whale Listening Project* with lectures by Roger and Katy Payne; and Annie Lewandowski, Kyle McDonald, Chris Gabriele, and Adam Frankel. Cosponsored with the Cornell Atkinson Center for Sustainability, the Cornell Council for the Arts, the Milstein Program in Technology and Humanity, and Media Art Xploration.

Virtual programs

Exhibition lectures with Nancy Green and Andrew Weislogel, hosted by the Tompkins County Public Library

Teacher Professional Development

"Art as a Window onto the Past and a Reflection of the Present" (a four-part series)

Family Outdoor Art at the Tompkins County Public Library

Japanese fish prints; Chinese calligraphy; collage; self-portraits; nature printing

Family Time with the Johnson

Interpreters from the Seneca Art & Culture Center at Ganondagan State Historic Site, Victor, NY; storyteller Perry Ground

Spring 2022

Migrations Visiting Artist Talk

Guadalupe Maravilla; cosponsored with the Migrations Global Grand Challenge, part of Global Cornell, with support from the Mellon Foundation's Just Futures Initiative

Hybrid lecture

"In Conversation" with Sultan Sooud Al-Qassemi, founder of the Barjeel Art Foundation in the United Arab Emirates, and Iftikhar Dadi, the John H. Burris Professor in the History of Art at Cornell

Gallery talk

"The Abbott Legacy: How Berenice Abbott Shaped the Photography of Tee Corinne and Honey Lee Cottrell" with activist Susie Bright

Cornell Department of Music

"Future Sounds Festival" with Elizabeth Ogonek, Xak Bjerken, Mark Stewart, Jesse Jones, Bart Hopkins, Corey Smythe, and students from MUSIC 2440

CNY Humanities Corridor:

Hodinqhsq:i? Holding Ground

Sachem Sam George; Kurt Jordan, Department of Anthropology and Director of the American Indian and Indigenous Studies Program; beadwork collector Dolores Elliot; Jolene Rickard, Department of the History of Art and Visual Studies

Virtual program

"Fragments of Eternity" with storyteller and performer Chirine El Ansary; cosponsored with Tompkins County Public Library

Teacher Professional Development

"Behind the Scenes at the Johnson: The Making of an Exhibition" (a two-part series); "Transformation Across Time and Culture" (a three-part series)

Family Time with the Johnson

Jay Leeming; Holly Adams

University partnerships

Fall 2021 classes served

College of Arts and Sciences

Advanced Spanish Writing Workshop (SPAN 2180)
American Dream?: Journalism, Politics, and Identity in US Immigration Policy (AMST 4318/ ENGL 4918/HIST 4318)

American Voices (ENGL 1158, FWS)

Ancient Peoples and Places (ANTHR 1200/ ARKEO 1200)

Art and Architecture of the Pre-Columbian Americas (ARTH 3566/ARKEO 3566/LATA 3566/ LSP 3566/VISST 3566)

Art Histories: An Introduction (ARTH 1100/ SHUM 1100)

Augustine's Confessions (CLASS 1562, FWS)

Buddhists in the Indian Ocean Arena: Past and Present (ASIAN 2248/HIST 2548/RELST 2248)

Chemical Facilities Boot Camp (CHEM 5110)

Community Engagement in Archaeology (ARKEO 3030, 6030/AMST 3039, 6039/ ANTHR 3030, 6030)

The Composer's Toolbox I (MUSIC 3141)

Conversational Latin I (LATIN 2207, 5227)

Creative Writing (ENGL 2800)

Cultural Studies (ENGL 1168, FWS)

Culture, Society, and Power (ANTHR 1101, FWS)

Curatorial Practicum: The Photobook (ARTH 4110, 6010)

Designing Archaeological Exhibits (ARKEO 4020, 6020/LA 4050, 6050)

Elementary Polish (POLSH 1131)

Feminist Theory (FGSS 3000)

French Intermediate Composition and Conversation II (FREN 2095)

Global Islam (HIST 1402, FWS)

Global Studies Gateway (GOVT 2274)

Graduate Research Methods in Art History (ARTH 6000)

Greek Myth (CLASS 1531, FWS)

Initiation to Greek Culture (CLASS 2603)

Intermediate Chinese Reading and Writing for Students of Chinese Heritage I (CHIN 2209)

Intermediate Polish I (POLSH 2033)

Introduction to Modern Western Art: Materials, Media, and the End of Masterpieces (ARTH 2600)

Introduction to Southeast Asia (ASIAN 2208)

Introduction to the Arts of Japan (ASIAN 3381/ ARTH 3820)

Introduction to the Classical World in 24 Objects (ARKEO 2700/ARTH 2200/CLASS 2700)

Japanese Poetry (ASIAN 3317)

Literature, Culture, Religion (ASIAN 1111, FWS)

Love and Death in Vienna (GERST 1122, FWS)

Migration: Histories, Controversies, and Perspectives (AMST 2810/ILRLR 2810/LSP 2810/ PAM 2810/SOC 2810)

Music Improvisation Ensemble (MUSIC 3660)

Nature-Culture: Ethnographic Approaches to Human Environment Relations (AII 2420/ ANTHR 2420/BSOC 2420)

Objects, Rituals, and Tea (ASIAN 4822, 6624/ ARTH 4424, 6822)

Perception, Cognition, and Development (PSYCH 1140, FWS)

Perspectives on Spain in Spanish (SPAN 2235)

Science, Technology, and Politics (STS 1101)

Sensational Religion (NES 2276/RELST 2276)

Shadowplay: Asian Art and Performance (ARTH 4852, 6852/ASIAN 4442, 6646/VISST 4852)

Shaping Sound I: An Introduction to Experimentation in Sound and Composition (MUSIC 2440)

University partnerships

Fall 2021 classes served

Small Forms, Big Ideas (GERST 1175, FWS)
Sociology of Medicine (STS 3111/BOSC 3111/
DSOC 3111/SOC 3130)
Songwriting (MUSIC 2111)
Sound, Sense, and Ideas (MUSIC 1701, FWS)
Spanish for Heritage Speakers (SPAN 2000/
LSP 2020)
Spanish for Heritage Speakers I (SPAN 1250/
LSP 1250)
Spanish Intermediate Composition and
Conversation II (SPAN 2095)
Sweetness: How Sugar Built the Modern World
(AMST 3015/ASRC 3010/LATA 3015/ROMS 3010/
SHUM 3010)
Ten Technologies That Shook the World?
(STS 2381/HIST 2881)
True Stories (ENGL 1134, FWS)
Wonderous Literatures of the Near East (NES 2754/
COML 2754/JWST 2754/SHUM 2754)
Word and Image (ENGL 1183, FWS)
Writing Across Cultures (ENGL 1111, FWS)
Writing and Sexual Politics (ENGL 1105, FWS)
Writing Berlin (GERST 1121, FWS)
Writing the Environment (ENGL 1130, FWS)

College of Agriculture and Life Sciences

The Art of Horticulture (PLHRT 2010)
The Art of Teaching (EDUC 2410)
Comparative Literature, Film, and Media
(COML 2030)
Design of Landscapes (LA 6910)
Designing Archaeological Exhibits (LA 4050, 605/
ARKEO 6020, 4020)
Discussions of Environment and Sustainability
(ENVS 2010, 2000/VISST 2002, 2012)
Environment and Sustainability Colloquium
(ENVS 2000, 2010/VISST 2002, 2012)

Graduate Individual Study in Landscape Architecture
(LA 5970)
Grounding in Landscape Architecture I (LA 1410)
Loneliness in the City (COML 1135, FWS)
Topics in Ecology and Evolutionary Biology
(BIOEE 1640, FWS)

College of Architecture, Art, and Planning

Drawing: Contemporary Art Practice Through
Drawing (ART 2501)
Introduction to Sculpture (ART 2401)
Photography: Introduction to Photography
(ART 2601)
Photography: Special Topics (ART 3699)
Print Media: Introduction to Print Media (ART 2301)

College of Human Ecology

Fashion, Art, and Design Thinking (FSAD 1250)
Hot and Hidden Topics in Global and Public Health
(NS 3610)
Introduction to Sustainable Design (DEA 2020)
Migration: Histories, Controversies, and
Perspectives (PAM 2810/ AMST 2810/LSP 2810/
ILRLR 2810/SOC 2810)
Multilingualism and Multiculturalism in Early
Childhood (HD 2350)
Policy Issues in Disaster Prevention and Recovery
(PADM 5734)
Project Management (PADM 5414)

Cornell Law School

Art Law (LAW 6103)

School of Industrial and Labor Relations (ILR)

Migration: Histories, Controversies, and
Perspectives (ILRLR 2810/AMST 2810/LSP 2810/PAM
2810/SOC 2810)

University partnerships

Spring 2022 classes served

College of Arts and Sciences

Advanced Spanish Writing Workshop (SPAN 2180)

The Arts of Southeast Asia (ARTH 3850, 6850/
ASIAN 3350/VISST 3696)

College Scholar Seminar (COLLS 2001)

Come Together: Public Spaces and German Culture
(GERST 3310)

Creative Writing (ENGL 2810)

Culture, Society, and Power (ANTHR 1101, FWS)

Curating the British Empire (STS 6634/ARTH 4720,
6720/BSOC 4634/HIST 4634, 6634/STS 4634)

Egyptomania? Egypt and the Greco-Roman World
(CLASS 2685/ANTHR 2285/ARKEO 2285/
NES 2985)

Elementary Polish I (POLSH 1131)

Expository Writing (ENGL 2890)

Foreign Policy as Subversion (HIST 1951/AMST 1951/
LATA 1951)

French Intermediate Composition and
Conversation II (FREN 2095)

Greek Myths (CLASS 1531, FWS)

History of Minorities in Ottoman West Asian and
North Africa (HIST 2461)

Humanities Scholars Research Methods
(ANTHR 3950/ARTH 3755/ASIAN 3375/NES 3750/
SHUM 3750)

Identity in the Ancient World (ARKEO 3738, 6838/
CLASS 3738/RELST 3738)

Intermediate Mandarin II (CHIN 2202)

Introduction to Latinx Studies (AMST 2106/
LSP 2100)

Looking for Love: Visual and Literary Cultures of
Love in the Medieval Mediterranean 1100–1400 AD
(ARTH 4305, 6305/NES 4795)

Love and Death in Vienna (GERST 1122, FWS)

Magic and Witchcraft in the Greco-Roman World
(CLASS 2846/ANTHR 2846/ARKEO 2846/
NES 2546)

Modern Chinese Art (ARTH 4816, 6816/
ASIAN 4473, 6673/SHUM 4916)

Museum Histories (ARTH 4630, 6630)

Paris, Capital of Modernity? (ARTH 3625, 6625/
SHUM 3625)

Perception, Cognition, and Development
(PSYCH 1140, FWS)

Producing Cloth Cultures (ARTH 4856, 6856/
CLASS 4756/SHUM 4866/VISST 4857)

Spanish for Heritage Speakers (SPAN 2000)

Theory and Method in Near Eastern Studies
(NES 4560)

True Stories (ENGL 1134, FWS)

Word and Image (ENGL 1183, FWS)

Writing Across Cultures (ENGL 1111, FWS)

Writing and Sexual Politics (ENGL 1105, FWS)

Writing History (HIST 1200, FWS)

University partnerships

Spring 2022 classes served

College of Agriculture and Life Sciences

The Art of Teaching (EDUC 2410)

Conversation with Communities for
One Health (NTRES 4150)

Global Water Sustainability (NTRES 1201)

Museums and Park Interpretation
(PLSCI 4825, 5825)

Peace Building in Conflict Regions: Case Studies
Sub-Saharan Africa Israel Palestinian Territories
(IARD 4721/ASRC 4721/DSOC 4721/GOVT 4723/
STS 4721/NES 4721)

Visual Communication (COMM 1300)

College of Architecture, Art, and Planning

Drawing: Introduction to Drawing (ART 2503)

Painting: Special Topics (ART 3299)

Photography: Introduction to Photography
(ART 2601)

Topics in Architecture (ARCH 1901, FWS)

College of Engineering

Operations Research and Information
Engineering Project (ORIE 4999)

College of Human Ecology

Fashion Draping (FSAD 2640)

Introduction to Global Health (NS 2600)

Johnson Business School

Luxury Marketing (HADM 4435)

Marketing Management for Services
(HADM 2430)

Wine Marketing (HADM 6430)



A class visits the Spring 2022 exhibition *Resistance Is Personal: The Photobook as Protest*, curated by students in a Fall 2021 Curatorial Practicum.

University programs

	PARTICIPANTS	PRESENTATIONS
Cornell	9,474	484
Other Colleges/ Universities	175	13
TOTAL	9,649	497

University partnerships

Departments and programs at Cornell

Africana Studies and Research Center
American Indian and Indigenous Studies Program
American Studies Program
College of Architecture, Art, and Planning
College of Arts and Sciences, Academic Advising
College Scholar Program
Cornell's Adult University (CAU)
Cornell Cooperative Extension
Cornell Health
Cornell Institute for Public Affairs
Cornell Law School
Department of Anthropology
Department of Archaeology
Department of Art
Department of Asian Studies
Department of Chemistry and Chemical Biology
Department of Classics
Department of Communications
Department of Comparative Literature
Department of Design and Environmental Analysis
Department of Development Sociology
Department of Ecology and Evolutionary Biology
Department of German Studies
Department of Government
Department of History
Department of the History of Art and Visual Studies
Department of Landscape Architecture
Department of Literatures in English
Department of Music
Department of Natural Resources
Department of Near Eastern Studies
Department of Psychology
Department of Romance Studies
Department of Science and Technology Studies
Department of Sociology
Division of Nutritional Sciences
Environmental and Sustainability Program (CALS)
Feminist, Gender, and Sexuality Studies (FGSS)
Fiber Science and Apparel Design (FSAD)
Horticulture Sciences
Human Development
Humanities Scholars Program
International Agriculture and Rural
Development Program
Jewish Studies Program
John S. Knight Institute for Writing
Kroch Library

Latin American Studies Program
Latina/o Studies Program
Office of Global Learning
Operations Research and Information Engineering
Religious Studies
School of Continuing Education and
Summer Sessions
School of Hotel Administration
School of Integrative Plant Science:
Horticulture Section
Society for the Humanities

Organizations and groups at Cornell

Alice Cook House
Arab Grad Student Association
Art Beyond Cornell
Campus Information and Visitor Relations
Carl Becker House
Cornell Association of Professors Emeriti (CAPE)
Cornell Campus Club
Cornell Class of 1962
Cornell Class of 1966
Cornell Libraries
Cornell Prison Reform and Education Project
Cornell Protestant Cooperative Ministry
Cornell Tarana
Cornell Thrift
Cornell Tower Club
Cornell Upward Bound
Court-Kay-Baker Residence Hall
Flora Rose House
Ganedago Residence Hall
Keeton House
Loving House
Mainland China Student Association
Mellon Just Futures Advisory Committee
Prefreshman Summer Programs (College of
Arts and Sciences, College of Human Ecology)
Toni Morrison Residence Hall
Women of MENA at Cornell

Other colleges and universities

Brown University, RI
Columbia University, New York, NY
Hobart and William Smith Colleges, Geneva
Ithaca College
State University of New York at Oneonta
Tompkins Cortland Community College, Dryden
Wells College, Aurora

Teaching partnerships

Cornell Faculty Advisory Committee

Gerard Aching
Professor, Africana and Romance Studies

Michael Ashkin
Associate Professor and Chair, Department of Art

Xak Bjerken
Professor, Department of Music

Iftikhar Dadi
*John H. Burris Professor in History of Art,
Department of the History of Art and Visual Studies*

David Faulkner
*Senior Lecturer, John S. Knight Institute for
Writing in the Disciplines and English*

Denise Green
*Assistant Professor, Department of
Fiber Science and Apparel Design; and
Director, Cornell Costume + Textile Collection*

Salah M. Hassan
*Distinguished Professor of Arts and Sciences
in Africana Studies; Director, Institute for
Comparative Modernities*

Cynthia Hazan
*Associate Professor,
Department of Human Development*

John Henderson
Professor, Department of Anthropology

Kent L. Hubbell
Professor, Department of Architecture

Johannes Lehmann
*Professor, School of Integrative Plant Science,
Soil and Crop Sciences Section*

Wolfgang H. Sachse
*Meinig Family Professor of Engineering Emeritus,
Sibley School of Mechanical and Aerospace
Engineering*

Daniel R. Schwarz
*Frederic J. Whiton Professor of English Literature
and Stephen H. Weiss Presidential Fellow*

Michael Tomlan
*Professor and Director, Historic Preservation
Planning, Department of City and Regional Planning*

Lyrae Van Clief-Stefanon
Associate Professor, Department of English

Teacher Planning Team

Jill Cusack
R. C. Buckley Elementary, Lansing

Jeanie Hochberg
Nathan T. Hall Elementary, Newark Valley

DeLaine Hodge
Trumansburg Middle School

Michelle Kirchgraber Newton
Ithaca High School

Sunny Miller
Newfield High School

Susan Phillips
Fall Creek Elementary, Ithaca

Aurora Rojer
Lehman Alternative Community School, Ithaca

Jessica Wall
George Junior Republic UFSD, Freeville

School and community partnerships

School programs served

Tompkins County

Belle Sherman Elementary School, Ithaca
 Beverly J. Martin Elementary School, Ithaca
 Boynton Middle School, Ithaca
 Caroline Elementary School, Ithaca
 Cayuga Heights Elementary, Ithaca
 Dryden Middle School, Dryden
 Elizabeth Ann Clune Montessori School of Ithaca
 Enfield Elementary School, Ithaca
 Fall Creek Elementary School, Ithaca
 Freeville Elementary School, Dryden
 Homeschoolers, Ithaca
 Ithaca High School, Ithaca
 Lansing High School, Lansing
 Lehman Alternative Community School, Ithaca
 Newfield Elementary School
 R. C. Buckley Elementary School, Lansing
 South Hill Elementary School, Ithaca
 Trumansburg Elementary School, Trumansburg
 Trumansburg High School, Trumansburg
 Trumansburg Middle School, Trumansburg

Broome County

Woodrow Wilson Elementary School, Binghamton

Cortland County

Cortland Middle School

New York County

Broome Street Academy

Chemung County

Elmira Free Academy

Seneca County

South Seneca Elementary School, Interlaken

Steuben County

Addison High School

Tioga County

Nathan T. Hall Elementary School, Newark Valley
 Newark Valley High School

Northland Job Corps Center, VT

Other facilities and organizations

Alzheimer's Association of Central New York
 Baden-Powell Council, Ithaca
 CiTi BOCES
 Church of Jesus Christ of Latter-day Saints
 Franziska Racker Center of Tioga County
 Greater Ithaca Activities Center (GIAC)
 Ithaca Festival
 Ithaca Public Education Initiative (IPEI)
 Kendal of Ithaca
 Lifelong
 Longview Community
 Love Living at Home
 Lyceum, Binghamton University
 McGraw House
 Monarch Landing Senior Community, Naperville, IL
 Museum Association of New York (MANY)
 NY State Association of Transportation Engineers
 NY State Teacher Association
 Newfield Public Library
 P. E. O. International
 Seneca Arts Culture Center, Ganondagan
 Seneca Towns Engaging People for Solutions Project
 Tompkins County Public Library
 Trumansburg Kids Explore and Discover
 Villa St. Benedict, Lisle, IL

School and community public programs

	<i>PARTICIPANTS</i>	<i>PRESENTATIONS</i>
School tours, workshops, and teacher training	4,346	247
Public programs, lectures, and presentations	2,590	37
Tours/workshops for adults	794	53
Tours/workshops for children	929	28
<i>TOTAL</i>	8,659	364

Interns

Madison Albano '22 <i>Membership and Development/ Student Educator</i>	Ashley Loke '22 <i>Academic Programs</i>	Lillie Steen '23 <i>Preparator</i>	Carla Escanillas '24
Ana Carmona-Pereda '24 <i>"Any Person, Many Stories" Project</i>	Anna Beini Lu '23 <i>Collections/ Visitors Services</i>	Anna Helen Stigum '22 <i>Collections</i>	Ashley Fan '23
Angela Chang '22 <i>Rights & Reproductions/ Student Educator</i>	Cecilia Lu '22 <i>Photography Collection</i>	Graham Stopa <i>Graduate intern for Provenance (Summer)</i>	Kaitlyn Feely '24
Amelia Clute '22 <i>Communications and Public Relations</i>	Hannah Master '23 <i>Print Room/Watermark Identification in Rembrandt's Etchings (WIRE)</i>	Odessa Thompson '24 <i>Community Programs</i>	Kaitlin Fisher '24
Clara Enders '22 <i>Student Educator</i>	Ayesha Matthan <i>Graduate intern for Academic Programs</i>	Grace Tran '23 <i>The Wong and Cheng Intern for Chinese Art (Summer 2021)/The Morgan Garden Intern/The Martie Young Asian Art Intern</i>	Kenneth Gonzalez '24
Isabel (Isa) Goico '24 <i>Graphic Design/ Visitor Services</i>	Isabella McDonald '22 <i>Photography Collection</i>	May Yuasa '24 <i>Student Educator</i>	Leah Han '25
Margaret Groton <i>Graduate intern for African art</i>	Sophia Miller '23 <i>School and Family Programs/ Student Educator</i>	Zain Abid '24	Maria Henriquez '23
Randi Hinds '24 <i>Student Engagement</i>	David Ni '24 <i>Print Room</i>	Santosh Adhikari '24	Erin Hockenberry '22
Alexa Kanarowski '22 <i>Digital Studio</i>	Alexandra Pultorak '23 <i>Student Engagement</i>	Noor Ahmed '23	Kacey Kim '25
Tomiris (Iris) Kazhmurat '22 <i>Modern and Contemporary Art/Visitor Services</i>	Shahad Salman '24 <i>Student Educator</i>	Jane Anderson-Schmitt '25	Rebekka Kivimae '25
Julia Kohn '24 <i>"Any Person, Many Stories" Project/ Visitor Services</i>	Shayla Sanchez '23 <i>School and Family Programs</i>	Vlad Asriev '24	Daniela Lee '22 [†]
Claudia León '23 <i>"Any Person, Many Stories" Project</i>	Leslie Seller <i>Graduate Development Associate</i>	Claire Beck Belman '23	Lucy Li '22
	Ryan Shim '24 <i>The Nancy Horton Bartels '48 Scholar for Education (Summer)</i>	Kaitlyn Beiler '23	Francesca Lojacono '24
		Mia Brown-Seguin '24	Mannayah Louis '24
		Lauren Celardo '24	Yibing Lu '25
		Steven Cha '23	Nika Mikec '23
		Jackson Chapin '24	Isabella Miller '24
		Michael Chen '24	Lisa Morton '23
		Aisha Choudery '25	Joseph Mullen '24
		Jordan Crayton '24	Alexa Natale '24
		Abbey Crowley '21	Thoko Nylasulu '24
		Brandon Daly '24	Serina Oh '24
		Stella Dang '25	Amira Olingou '23
		Bianny De La Cruz '24	Abigail Parker-Blier '24
		Elijah Diaz '23	Shilvaan Patel '24
		Alex Duncan '24	Julia Prescott '23
		Grace Elmore '25	Ari Dev Rangarajan '25
		Griffin Erich '24	William Remoundos '25
			Shayla Sanchez '23
			Karla Santana '22
			Jessi Schle Witt '24
			Faith Shote '24
			Audrey Sickles '24
			Sparkle Sillim '22
			Isabel Stanley '24
			Oliver Stern '24
			Sabine Stock '24
			Rahma Tasnim '23
			Sofia van Mierlo '25
			Megan Ventura-Lopez '25
			Josh Washington '23
			Grace Yao '23
			Audrey Yin '25
			<i>Visitor Services</i>

[†] deceased

Student engagement and activities

Student wellness workshops

Virtual workshop on traditional carving methods with artist Hayden Haynes (*see page 11*)

Take 'n' Make workshop with metalsmith Elaan Greenfield

Take 'n' Make workshop with ceramic artist Joanne Greenbaum

Halloween tote-bag painting (*pictured*)

Upcycling workshop cohosted with Cornell Thrift

The Johnson Museum of Art's Wellness Initiative has been made possible by a generous member of the Museum's Advisory Council.

Special screening with Q&A

Dante's Inferno (2007; 78 min.) with artist and filmmaker Sandow Birkin conjunction with the exhibition *Visions of Dante*

Spring Gala

"Metamorphosis: Celebration Our Year of Change"
With Cornell Tarana, Cornell Lion Dance, Cornell Prison Reform and Education Project, and Cornell Fashion Collective



Museum Club

Rayna Klugherz '23, *president*
Sophia Miller '23, *vice president*
Jasmine Love '23, *outreach coordinator*

Madison Albano '22
Clara Enders '22
Alicia Gonzalez '24
Greg Kerr '24
Val Lenis '24
Aidan Reineman '22
Victoria Reiter '24
William Serrano '24
Tracy Zhang '23

Student Educators: Art & the Museum (SEAM)

Madison Albano '22
Clara Enders '22
Sophia Miller '23
Shad Salman '24
May Yuasa '24

Loans from the collection

Supernatural America: The Paranormal in American Art at the Toledo Museum of Art (June 12–September 5, 2021), the Speed Art Museum, Indianapolis (October 7, 2021–January 2, 2022), and the Minneapolis Institute of Art (February 19–May 15, 2022)

Edwin Dickinson (American, 1891–1978)
Woodland Scene, 1929–35
Oil on canvas
Gift of Esther Hoyt Sawyer, in memory of her father, William Ballard Hoyt, Class of 1881 and Trustee of Cornell, 1895–1900, 54.033

Andy Warhol at the Art Gallery of Toronto (July 21–October 24, 2021) and the Aspen Art Museum, Colorado (December 3, 2021–March 27, 2022)

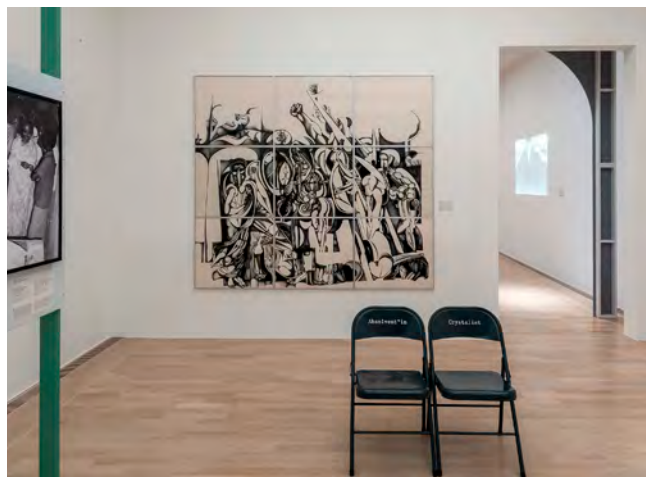
Andy Warhol (American, 1928–1987)
Most Wanted Men No. 1, John M., 1964
Screenprints on linen
Acquired with funds provided by the National Endowment for the Arts, and through the generosity of individual donors, 76.048 a,b

Alice Dalton Brown: Summer Breeze at the My Art Museum, Seoul (July 23–November 7, 2021)

Alice Dalton Brown (American, born 1939)
Retreat Grasses, 1990
Pastel on paper
Gift of the artist and Eric Brown, MEd 1967, 2013.058

Rosemary Mayer: Ways of Attaching at the Swiss Institute / Contemporary Art, New York, NY (September 9, 2021–January 9, 2022)

Rosemary Mayer (American, 1943–2014)
Crescentia, 1975
Wire screen, copper wire, synthetic mesh, and paint
Gift of the artist, made possible through the Creative Artists Public Service Program, 77.049



Gruppendynamik—Kollektive der Moderne (*Group Dynamics—Collectives of the Modernist Period*) at Lenbachhaus, Munich (October 19, 2021–June 12, 2022)

Ibrahim Mohammed El-Salahi
(Sudanese, born 1930)

Funeral and the Crescent, 1963
Oil on hardboard
Gift of the artist, through Mariska Marker, 2000.021.001

Above, center

The Inevitable, 1984–85
India ink on nine sheets of Bristol board, each framed individually
Acquired through the African Acquisition Fund, a purchase fund established through the exchange of gifts from Mr. and Mrs. William W. Brill, and other donors, 98.058 a-i

Amir Nour (Sudanese, 1939–2021)
Lock, 1973
Bronze with wood
Gift of the Friends of African Art, 99.036

Loans from the collection

Path of the Tea Bowl at the Alfred Ceramic Art Museum, Alfred University, New York
(September 23, 2021–March 27, 2022)

China, Southern Song dynasty (1127–1279)
Tea bowl with design of phoenix and plum blossoms, Jizhou ware, 12th or 13th century
Stoneware
George and Mary Rockwell Collection, 63.362

China, Northern Song dynasty (960–1127)
Shallow bowl, Yaozhou ware
Ceramic with olive green celadon glaze
George and Mary Rockwell Collection, 68.251

Japan
Tea bowl, Mino ware, Black Oribe type, ca. 1800
Stoneware
George and Mary Rockwell Collection, 69.142

China, Southern Song dynasty (1127–1279)
Tea bowl, Jizhou ware, 12th or 13th century
Glazed stoneware
Gift of Harry Lynch III, 87.081.004

Japan
Tea bowl, Black Seto ware, 17th century
Glazed stoneware
Gift of Professor Robert B. Jones, 98.083.001

China, Tang dynasty (AD 618–906)
Tea bowl, Yue ware
Green-glazed stoneware
Gift of Professor John McCoy, PhD 1966, and Stella Fessler-McCoy, 2001.078.008

Vietnam
Bowl with design of chrysanthemum, 15th–16th century
Stoneware with underglaze blue
Gift of Robert L. Retka and Carol Kim Retka, 2004.002.018

Shimizu Uichi (Japanese, 1926–2004)
Temmoku bowl, ca. 1963
Glazed stoneware
Gift of Robert J. Smith, PhD 1953, and Kazuko Smith, 2005.044.024

Otagaki Rengetsu (Japanese, 1791–1875)
Tea bowl, ca. 1865–70
Glazed ceramic
Acquired through the generosity of Ellen Avril, 2007.014.001

China, Southern Song dynasty (1127–1279)
Tea bowl, Jian ware, 12th or 13th century
Glazed stoneware
Gift of Robert Tichane, 2008.056.001

China, Northern Song dynasty (960–1127)
Tea bowl, Cizhou-type ware, 11th or 12th century
Glazed stoneware with white slip
Gift of Dr. Alfred Greisman, Class of 1955, and Linda Greisman, by exchange, and gift of Leverett S. Woodworth, MD 1926, and Iris L. Woodworth, by exchange, with additional support from F. Eunice Shatzman, Class of 1949, and Herbert F. Shatzman, supplemented by the Lee C. Lee Fund for East Asian Art, 2009.011

Tomioka Tessai (Japanese, 1836–1924)
Sasaki Haruko (Japanese, 1847–1940)
Tea bowl with design of pine tree and Mt. Fuji, 1918
Glazed stoneware
Acquired through the George and Mary Rockwell Fund, 2009.016.001

Japan, Edo period (1603–1868)
Mended tea bowl, Hagi ware, 17th century
Glazed stoneware and lacquer
Acquired through the George and Mary Rockwell Fund, and gift of the Estate of Louise Taraldson Woods, by exchange, with additional support from Ellen Avril, and gift of Noyes Huston, Class of 1932, by exchange, 2009.016.002

Japan, Edo period (1603–1868)
Red Shino ware tea bowl, 17th–18th century
Stoneware
Gift of Margaret and Frank Robinson, 2010.006.008

Loans from the collection

Rembrandt in Amsterdam: Creativity and Competition at the Städel Museum, Frankfurt (October 6, 2021–January 30, 2022)

Nicolaes Elias Pickenoy
Dutch, 1588–1650/56
Diana and Actaeon, ca. 1640
Oil on panel
Bequest of Roger P. Clark, 55.045

Emma Amos: Color Odyssey at the Philadelphia Museum of Art (October 9, 2021–January 2, 2022)

Emma Amos (American, 1937–2020)

Horizons, ca. 1968
Aquatint and sugarlift with two-color screenprint on heavy wove paper, AP III
Gift of Caroline Goldsmith, 81.126.004

Have Faith, 1991
Etching, aquatint, monotype, chine collé collage, and African fabric on paper, edition 7/8
Acquired through the Truman W. Eustis III, Class of 1951, Fund, and through the generosity of the Class of 1951, 2017.008

Stars and Stripes, 1992
Oil on paper with George Shivery photo laser transfer, edition 4/4
Gift of Sylvan Cole, Jr., Class of 1939, 2001.022

Andrea Bowers at the Museum of Contemporary Art, Chicago (November 20, 2021–March 27, 2022), and at the Hammer Museum, Los Angeles (June 5–September 11, 2022)

Andrea Bowers
American, born 1965
22% of deportations involve parents of U.S. citizens (Immigrant Justice activist, May Day 2014, Los Angeles), 2014
Colored pencil on paper
Acquired through the Beth Treadway, Class of 1970, and Stephen Treadway, Class of 1969, Fund, in honor of Cathy Rosa Klimaszewski's retirement as the Harriett Ames Charitable Trust Curator of Education, 2018.071

Water Scarcity: Perpetual Thirst at Wave Hill, Bronx, New York (May 19–August 28, 2022)

Lucy + Jorge Orta
Lucy Orta (British, born 1966)
Jorge Orta (Argentinian, born 1953)
OrtaWater—Antarctica, 2013
Acquired through the Stern Family Contemporary Art Acquisition Fund, 2018.032

Works conserved



Richard Hunt
American, 1935–2023
Untitled, ca. 1967
Cor-Ten steel
23 1/2 × 36 × 68 inches (59.7 × 91.4 × 172.7 cm)
Gift of Carol Simon Dorsky
97.040

*On the Sherry and Joel Mallin Sculpture Court,
June 2022*

Jacopo Amigoni
Italian, ca. 1685–1752
Hannibal Swearing Eternal Enmity to Rome, ca. 1735
Oil on canvas
Canvas: 53 1/2 × 48 1/8 inches (135.9 × 122.2 cm);
Frame: 63 3/8 × 58 inches (161 × 147.3 cm)
Gift of Miriam Zinder Cutler, Class of 1956,
in honor of her Class's 65th Reunion
2020.053

Charlotta Burešová
Czech, 1904–1983
Seated man holding a hat or dish in his lap
Charcoal and pastel or crayon
Frame: 12 1/16 × 10 1/8 inches (30.6 × 25.7 cm)
Gift of Alaine Troisi
2020.030.001

Charlotta Burešová
Czech, 1904–1983
The Young Scrubwomen, 1943
Watercolor
Frame: 12 3/4 × 9 3/4 inches (32.4 × 24.8 cm)
Gift of Alaine Troisi
2020.030.002

Anthony Caro
British, 1924–2013
Double Variation, 1983–84
Steel
88 × 120 × 74 inches (223.5 × 304.8 × 188 cm)
Gift of Martin Z. Margulies Foundation, Inc.
2007.094

Jennifer Cecere
American, born 1950
Crown, 1978
Acrylic on lace
16 × 20 inches (40.6 × 50.8 cm)
Gift of the artist, Class of 1973, made possible
through the Creative Artists Public Service Program
81.090

Works conserved

Claire Falkenstein
American, 1908–1997
Struttura Grafica, 1972
Collagraph on C. M. Fabriano heavy wove paper
Edition 117/125
Plate: 18 3/8 × 18 5/8 inches (46.7 × 47.3 cm);
Sheet: 29 7/8 × 29 7/8 × 1 1/2 inches
(75.9 × 75.9 × 3.8 cm)
Acquired through the Truman W. Eustis III,
Class of 1951, Endowment
2021.006

Gai Qi
Chinese, 1774–1829
Flowers, 1822
Hanging scroll: ink and colors on silk
49 3/4 × 12 7/8 inches (126.4 × 32.7 cm)
Gift of Professor Ray J. Wu
81.099.002

Hanna Grant
American, active 19th century
Untitled (mourning picture)
Watercolor, ink, and pencil on silk
Support: 12 × 15 3/8 inches (30.5 × 39.1 cm);
Mount: 14 × 17 inches (35.6 × 43.2 cm)
Gift of Arthur W. Wilson, Class of 1915
65.468

Pan Simu
Chinese, 1756–1843
Landscape, 1806
Hanging scroll: ink on paper
43 3/8 × 20 1/8 inches (110.2 × 51.1 cm)
Gift of Daisy Yen Wu in memory of
Yen Hsiao-fang and Yen Tse-king
79.060.005

Malva Schalek (Malvina Schálková)
Czech, 1882–1944
Scene of people eating beneath an arch, 1942
Pencil
7 7/8 × 11 3/8 inches (20 × 28.9 cm)
Gift of Alaine Troisi
2020.030.003

Otto Unger
Czech, 1901–1945
Figures in an alley or cramped courtyard (verso);
study of building with stairway and arches (recto)
Watercolor and gouache
Visible dimensions (verso):
10 3/4 × 16 3/16 inches (27.3 × 41.1 cm);
Visible dimensions (recto):
16 7/8 × 11 5/8 inches (42.9 × 29.5 cm)
Gift of Alaine Troisi
2020.030.004

Otto Unger
Czech, 1901–1945
*Untitled (building the railroad from
Bohušovice to Terezín)*, 1942
Charcoal
Sheet: 12 5/16 × 17 1/4 inches (31.3 × 43.8 cm)
Gift of Alaine Troisi
2020.030.005

Unidentified artist
Portrait of a woman with green eyes
Charcoal and pastel
Sheet: 16 7/8 × 12 3/8 inches (42.9 × 31.4 cm)
Gift of Alaine Troisi
2020.030.006

Unidentified artist
*Landscape with water, a stone bridge, and
a cathedral*
Watercolor
Sheet: 9 1/16 × 13 inches (23 × 33 cm)
Gift of Alaine Troisi
2020.030.007

Wu Xizai
Chinese, 1799–1870
Blossoming Flowers and Vines, 19th century
Hanging scroll: ink and colors on paper
56 3/4 × 14 3/4 inches (144.1 × 37.5 cm)
Gift of Professor Ray J. Wu, in honor of Daisy Yen Wu,
and in memory of Hsien Wu
84.105.003

Collections support

Donors of gifts-in-kind

Helen Anbinder, Class of 1962, and
Paul Anbinder, Class of 1960

Peter Lee Askin and Nancy Askin, in memory of
Seymour R. Askin, Jr., Class of 1947, and
Helen-Mae Askin

Bequest of Rosalyn Zalutsky Baron, Class of 1953

Jose G. Calle, Class of 1967, MChE 1968

Douglas L. Cohn, Class of 1979, DVM 1985

Carin Cunningham and Michael R. Cunningham,
in memory of Evie Ducie

Carin Cunningham and Michael R. Cunningham,
in memory of Malley Partsch

Deborah Goodman Davis, Class of 1985, and
Gerald R. Davis, Class of 1984

Alan B. Harris, Class of 1953, and
Elizabeth Heekin Harris

Alexander Ho, Class of 1996, Bong Lee, and Alex Lin

Nazim Jaffer, MD, and Tazim Jaffer

Johanna Beale Keller and Charles Frederick Martin,
in memory of Anne Beale Parmelee and
Alfred Gray Parmelee

Stephan M. Loewentheil, JD 1975

Thomas A. Mann, Class of 1964, and Lauren Petrella

Professor Tsu-Lin Mei and Teresa Mei

National Philanthropic Trust

Estate of Kadir Rasnie Noor

Edward and Winifred Nyhus

Jonathan D. Reiff, in memory of
Dr. Harry Reiff and Ione Drake Reiff

Margaret and Frank Robinson

Dee Shapiro

Linda R. Silverman

Kim Straus

The Torpey Family: Neil A. Torpey, JD 1985, and
Piper A. Torpey, Class of 2021

Beth Treadway, Class of 1970, and
Stephen Treadway, Class of 1969

Ralph S. Young, Class of 1971

Deaccession funds

Victor and Marie Cole

Estate of Charles Baskerville, Class of 1919

Collections support

Funds applied toward acquisitions

Acquired in honor of Professor Claudia Lazzaro on the occasion of her retirement through the Professor M. H. Abrams and Ruth Abrams Purchase Fund, the Ernest I. White, Class of 1893, Endowment, and contributions from the Faculty of the Department of the History of Art and Visual Studies

Nancy Horton Bartels, Class of 1948, Endowment

John H. Burris, Class of 1954, Fund

Class of 1962 Fund for Photography

Cornell University Department of Classics

Jennifer, Gale, and Ira Drukier Fund

Herbert F. Johnson, Class of 1922, Endowment

Warner L. Overton, Class of 1922, Endowment

Frank and Margaret Robinson Prints, Drawings, and Photographs Endowment

George and Mary Rockwell Fund

Robert J. Smith, PhD 1953, and Kazuko Smith Endowment for Japanese Art

Bequest of Louise C. Stetter, in memory of W. Cornell Dechert, Class of 1928

Jarett F. Wait, Class of 1980, and Younghee Kim-Wait Endowment for Contemporary Islamic and Middle Eastern Arts

Ernest I. White, Class of 1893, Endowment Fund

Stephanie L. Wiles Endowment

Donors to acquisition funds

Donors from the Class of 1962

Donors to the Class of 1970

Ann Franzen, Class of 1975, and John Franzen, Class of 1970

Marilyn Friedland, Class of 1965, and Lawrence Friedland

Donors to the Friends of Photography Acquisition Committee Fund

Moira Hearne Hintsa, Class of 1974 and Mark Hintsa

Amy Jai-Sien Lai, Class of 1999

Daniel R. Schwarz and Marcia Jacobson

Marlene Fogarty Sughrue, Class of 1988

Deborah Troner, Class of 1964, and Michael Troner MD, Class of 1964

Donors in Memory of Seth Matthew Willenson, Class of 1968, Fund

Foundation, government, and corporation support

Adler Foundation
Allan & Jean Frumkin Charitable Fund
America's Charities*
American Endowment Foundation
Analog Devices Inc.*
The Andrew W. Mellon Foundation*
Barron Family Foundation
Benevity*
Bessemer Giving Fund
BlackRock Financial Management*
Bright Funds Foundation*
Bristol-Myers Squibb Company*
California Community Foundation
Cisco Systems Incorporated*
Citrin Family Foundation
Cornell Foundation
Cornell University Foundation (UK) Ltd.
David M. & Hope G. Solinger Foundation
Dawn M. Szurek Revocable Trust
The E. Rhodes & Leona B. Carpenter Foundation
The Ellen and Gary Davis Foundation
Engaged Cornell
Evanston Community Foundation
ExxonMobil Foundation*
Fannie Mae Foundation*
The Fein/Ross Family Foundation
Fidelity Charitable Gift Fund
First Manhattan Company
Gladys Krieble Delmas Foundation
Goldman Sachs Philanthropy Fund
Google Incorporated*
Greater Cincinnati Foundation
Gretchen D. Frank Trust
Herbert & Roseline Gussman Foundation
The James R. K. Kantor Trust
Jewish Community Federation
Jewish Communal Fund of NY

Johnson Charitable Gift Fund
Kanders Foundation Incorporated
Laura J. Clark Trust
Malcolm Hewitt Wiener Foundation
Mayrsohn International Trading Co., Inc.
The Meinig Family Foundation
The Midvale Foundation
Morgan Stanley Impact Fund
Morris & Rosalind Goodman Family Foundation
National Philanthropic Trust
New York Community Trust
New York Life Foundation*
New York State Council on the Arts
Opatrny Family Foundation
Patricia Kuei-Hua Tsai Revocable Intervivos Trust
Pimco Foundation*
Ralph M. Wynn Foundation
Robert G. & Jane V. Engel Foundation
Ronald P. & Susan E. Lynch Foundation
Schwab Fund for Charitable Giving
State Street Bank & Trust Company
Terra Foundation for American Art
Thermo Fisher Scientific*
United Health Group*
USB*
Vanguard Charitable Endowment Program

New grant award

The J. M. McDonald Foundation supported the Museum's education programs with a \$25,000 grant.

** matching gifts*

Financial statements

Statement of Overall Revenue and Expenditures

FOR THE YEAR ENDED JUNE 30,

	2021-22	2020-21	2019-20
<i>Support and Revenue</i>			
University Appropriation	\$2,289,138	\$2,221,126	\$2,429,405
Endowment & Investment Income	\$1,640,047	\$1,645,525	\$1,672,116
Restricted Gifts*	\$221,471	\$1,287,964	\$474,088
Annual Fund	\$759,554	\$804,166	\$565,170
Grants & Foundations	\$128,464	\$136,976	\$198,393
Rental of Facility	\$54,650	\$2,300	\$51,861
Other Earned Income	\$14,836	\$7,207	\$37,130
Deaccessioning (restricted)	\$0	\$214	\$42,906
 TOTAL INCOME	 \$5,108,160	 \$6,105,478	 \$5,471,069
* Not reflected here are gifts to the Museum's endowment; these gifts totaled \$979,670 in 2021-22.			
<i>Expenditures</i>			
<i>Program</i>			
Curatorial Departments	\$736,053	\$830,682	\$1,008,101
Education	\$526,342	\$427,924	\$388,107
Registrar & Installation	\$423,674	\$441,682	\$474,351
Digital Access Project	\$53,633	\$50,562	\$50,853
Exhibitions	\$206,366	\$98,884	\$295,982
Conservation	\$82,197	\$50,912	\$4,932
TOTAL PROGRAM	\$2,028,265	\$1,900,646	\$2,222,326
 <i>Capital</i>			
Art Purchases	\$473,920	\$538,218	\$664,659
Other Capital	\$105,098	\$145,000	\$236,530
TOTAL CAPITAL	\$579,018	\$683,218	\$901,189
 <i>Public Affairs</i>			
Development	\$272,553	\$188,326	\$168,329
Publications	\$114,061	\$101,025	\$123,893
Membership	\$92,311	\$80,527	\$84,857
TOTAL PUBLIC AFFAIRS	\$478,925	\$369,878	\$377,079
 <i>Building</i>			
Security	\$452,602	\$239,238	\$401,264
Gallery Maintenance	\$37,291	\$41,948	\$45,636
Building Maintenance	\$491,156	\$456,634	\$443,712
Utilities	\$223,431	\$335,565	\$352,735
Rental of Facility	\$54,650	\$0	\$106,585
TOTAL BUILDING	\$1,259,130	\$1,073,385	\$1,349,932
 <i>Administration</i>			
Business Operations	\$269,199	\$288,759	\$364,254
Director's Office	\$457,407	\$419,332	\$437,604
Computer Support	\$25,123	\$26,587	\$11,236
TOTAL ADMINISTRATION	\$751,729	\$734,678	\$813,094
 TOTAL EXPENDITURES	 \$5,097,067	 \$4,761,805	 \$5,663,620
 Gifts to Museum Endowment *	 \$976,670	 \$3,369,321	 \$212,128
Market Value of Endowment (restricted)	\$39,586,550	\$34,750,000	\$23,952,000
Market Value of Endowment (unrestricted)	\$16,622,956	\$18,895,000	\$14,696,000
Market Value of Endowment Total	\$56,209,506	\$53,645,000	\$38,648,000

Financial statements

Statement of Operating Revenue and Expenditures

FOR THE YEAR ENDED JUNE 30,

	2021-22	2020-21	2019-20
<i>Support and Revenue</i>			
University Appropriation	\$2,289,138	\$2,221,126	\$2,429,405
Endowment Income	\$1,196,571	\$1,248,439	\$1,287,012
Restricted Gifts for Operations	\$88,382	\$72,165	\$32,298
Annual Fund	\$759,554	\$804,166	\$565,170
Grants & Foundations	\$128,464	\$136,976	\$198,393
Rental of Facility	\$54,650	\$2,300	\$51,861
Other Earned Income	\$14,836	\$7,207	\$37,130
OPERATING INCOME	\$4,531,595	\$4,492,379	\$4,601,269
<i>Expenses</i>			
<i>Program</i>			
Curatorial Departments	\$736,053	\$830,682	\$1,008,101
Education	\$526,342	\$427,924	\$388,107
Registrar & Installation	\$423,674	\$441,682	\$474,351
Exhibitions	\$206,366	\$98,884	\$295,982
Conservation	\$82,197	\$55,562	\$4,932
Digital Access Project	\$53,633	\$50,912	\$50,853
TOTAL PROGRAM	\$2,028,265	\$1,905,646	\$2,222,326
<i>Public Affairs</i>			
Development	\$272,553	\$188,326	\$168,329
Publications	\$114,061	\$101,025	\$123,893
Membership	\$92,311	\$80,527	\$84,857
TOTAL PUBLIC AFFAIRS	\$478,925	\$369,878	\$377,079
<i>Building</i>			
Security	\$452,602	\$239,238	\$401,264
Gallery Maintenance	\$37,291	\$41,948	\$45,636
Building Maintenance	\$491,156	\$456,634	\$443,712
Utilities	\$223,431	\$335,565	\$352,735
Rental of Facility	\$54,650	\$0	\$106,585
TOTAL BUILDING	\$1,259,130	\$1,073,385	\$1,349,932
<i>Administration</i>			
Business Operations	\$269,199	\$288,759	\$364,254
Director's Office	\$457,407	\$419,332	\$437,604
Computer Support	\$25,123	\$26,587	\$11,236
TOTAL ADMINISTRATION	\$751,729	\$734,678	\$813,094
Operating Expenses	\$4,518,049	\$4,083,587	\$4,762,431
Operating Results	\$13,546	\$408,792	-\$161,162

* These results are derived from the statement of overall revenue and expenditures (*previous page*).

Operating results do not include art purchases and capital expenditures or the funding used to support them.

Staff

Kate Addleman-Frankel
*Gary and Ellen Davis
Curator of Photography*

Luke Andrews
*Security and Events
Associate*

Ellen Avril
*Chief Curator and
Judith H. Stoikov
Curator of Asian Art*

Carol Anne Barsody
*Administrative Assistant
to the Director and
Deputy Director*

David O. Brown
Museum Photographer

Angela Burgio
Assistant Registrar

Courtney Campbell
Director of Development

Peggy Chao
*Curatorial Assistant for
Asian Art*

Matt Conway
Registrar

Milo Dela Cruz
Accounts Manager

Isabelle Dobson
Curatorial Assistant

Peter Gould
*Deputy Director and
Director of Finance
and Administration*

Nancy E. Green
*Gale and Ira Drukier
Curator of European and
American Art, Prints &
Drawings, 1800–1945*

Carol Hockett
*Hintsa Family Manager
of School and Family
Programs*

Amber Husain
*Security and Events
Assistant*

Andrea Inselmann
*Curator of Modern and
Contemporary Art*

Valerie Kane
Assistant Registrar

Laura Libert
Curatorial Assistant

Chris Loomis
Assistant Preparator

Clara Lombardi
*Security and Visitor
Services Assistant*

Ayesha Matthan
*Curatorial Assistant for
Asian Art*

Jessica Levin Martinez
*Richard J. Schwartz
Director*

Andrea Murray
*Lead Educator and
Pre-K-12 Curriculum
Development Specialist*

Maryterese
Pasquale-Bowen
*School Programs
Assistant*

Andrea Potochniak
Editorial Manager

Sue Rakow
*Kids Discover the Trail!
Assistant*

Anissa Rahadiningtyas
*Curatorial Assistant for
Asian Art*

Gemma Rodrigues
*Ames Director of
Education and Curator of
the Global Arts of Africa*

David Ryan
*Chief Preparator and
Building Coordinator*

Jennifer Ryan
*Annual Giving Program
Manager*

Elizabeth Saggese
*Administrative Assistant
for Education*

Amanda Schaufler
*Visitor Services
Associate*

Holly Smith
*Chief of Security and
Special Events
Coordinator*

Anna C. Stratton
Gift Associate

Leah Sweet
*Lynch Curatorial
Coordinator for
Academic Programs*

Annmarie Ventura
*Andrew W. Mellon
Coordinator of Student
Engagement*

Chad Walsh
*Visitor Services
Associate*

Andrew Weislogel
*Seymour R. Askin, Jr.
'47 Curator, Earlier
European and
American Art*

William J. Woodams
Preparator

Elizabeth S. Yearsley
*Post-Baccalaureate
Fellow in Pre-K-12
Museum Education*

Members and special gifts

New gifts to endowment funds

Marilyn and Lawrence Friedland Art Acquisition Fund

Meyer A. and Karen Charel Gross Internship Endowment

Hintsa Family Manager of School and Family Programs

Johnson General Operating Endowment

Ralph and Jeanne Kanders Museum Library Endowment

Sherry and Joel Mallin Director's Discretionary Endowment

Grace Moak Meisel Memorial Internship Endowment

Museum Exhibition Endowment

Robert and Kazuko Smith Purchase Endowment

Judith H. Stoikov Curator of Asian Art

Deborah and Michael Troner MD '64 Acquisition Fund

Gifts \$500,000 to \$999,999

Susan Lynch

Gifts \$100,000 to \$499,999

Mark and Moira Hintsa

Deborah Goodman Davis and Gerald Davis

Gifts \$25,000 to \$49,999

Ronni Lacroute

Donald and Maria Cox

Gary and Ellen Davis

Gifts \$10,000 to \$24,999

Ellen and Stephen Adelson

John and Elaine Alexander

Stephen and Janice Ashley

Rona Hollander Citrin and Jeffrey Citrin

Gabrielle and Stephen Cornick

Michele Sherman-Kalish and Geoffrey Kalish

Joyce and Robert Evans

Carolyn and Malcolm Wiener

Barbara and Gerald Batt

Andrea Gottlieb Vizcarrondo and Paul Vizcarrondo

Class of 1962

Bruce D. and Sandra S. Steiner

Ruth Lekan

Melissa Russell Rubel and Matthew Rubel

Elizabeth and Alan Harris

Richard and Lisa Baker

Katie N. Bartels

George and Sandra Garfunkel

Jeff and Jill Libshutz

Phillip E. McCarthy and James Brodsky

Nancy Meinig

Donald and Judith Opatrny

Joel and Joan Picket

Nelson and Nancy Schaenen

Judith Stoikov

Gifts \$5,000 to \$9,999

William Gratz and Jay Bruno

Lewis Ka Hang Cheng

Marnie Gelfman

Alexander W. Ho

Michael I. Jacobs

Younghee Kim-Wait

Evalyn and Stephen Milman

Betty Ann Besch Solinger (David M. and Hope G. Solinger Foundation, Inc.)

Charles Evan and Patricia Stewart

Michelle and George Weiner

Gifts \$1,000 to \$4,999

Aaron Akabas and Shelley Epstein Akabas

Genevieve and John Allen

Ellen Avril

Ferdinand Avril

Martha Coultrap and Harvey Bagg

Joan and Jeffrey Barist

Nora and Guy Barron

William M. Bellamy Jr.

Madeleine Miller Bennett

A. David Bernanke

Joan Birchenall

Janet Bishop and Thad Povey

David and Kathleen Boochever

Jim and Terry Byrnes

Courtney Campbell

Theodore Casper

Kay and Elliot Cattarulla

Angela Cheng-Cimini and Michael Cimini

George Cohen

Merry Schultz Foresta and J. Andrew Grundberg

Gretchen Dorfner Frank

Mary Gail and David Gearn

Lisa Megargle George and Glenn George

Andrea Glanz and James Irish

Gail Hill Gordon

Mary and Bradley Grainger

Daniel Greenberg

Matt Hintsa

Marcia Jacobson and Dan Schwarz

Dale Reis Johnson and Richard Johnson

Mitchell L. Kase and Sara Lacy

Stephen Krauss

Amy Jai-Sien Lai

R. Alexander Latella

Judith Lehr

Joan T. R. Macmillan

Jessica Levin Martinez and Alan Martinez

Elizabeth McLafferty

Barbara and Arthur Michaels

Alexandra Migoya

Margot Milberg

Carol and Charles Mund

Nancy Neal

Allen Newman

Donors of gifts-in-kind and donors to art acquisition funds for the year are listed on pages 28–29.

Members and special gifts

Roland Philip and Linda Sandhaus	Shawn Castellanos	Soo Young and Dale Sang	Gail and Bradford Carruth
Uwe and Inge Reichenbach	Laura Clark	Leslie and Anthony Scattone	Jessica Chen
Carol and Sander Ross	David Cofrin and Christina Tryba-Cofrin	James and Patricia Stocker	Lawson Cooper
Carolyn Sampson	Peg Crowley	Karen and William Tafuri	John Doyle
Elias Savada	David and Peggy Dunlop	Li Tao and Jackson Lee	Sandy and Glenn Galbreath
Matthew P. Schaab	Jennifer Engel and Larry Young	Nancy and Charles Trautmann	Nancy and John Garland
Lisa Schenkel and Gregory Crandall	Bette and Darel Franklin	Paul Tuller	Chloe Gatta
Frances Shloss	Ann and John Franzen	Susan and Fred Van Sickle	Kevin Goetz
Craig Snider	Laura Fratt and Michael Isby	Dori and Terry Warren	Ruth and Peter Goodstein
Ida Sue and Peter Starke	Kristen Fudeman and William Ham	Catherine and Christopher Watkins	Barbara Grambow
Peter Stifel	Sarah and Peter Gould	Dr. Daniel Weidenthal	Gerald Greenberg
Marlene and Joe Stregack	Olga Gutman	Fred Widding	Gloria Guo
Beth and Steve Treadway	Pauline Halpern	Stephanie Wiles and Jeff Rubin	C. David Himmelblau
Albert Tsuei	Cheryl Hannan		Katrina James
Dr. Larry Tune	Rick Harrison	Gifts \$250 to \$499	Eric Kinder
Jay and Harriet Waks	Marc and Karen Harwitt	Jonathan Abrams	Marjorie Klein
Geraldine Baker Warner	Joan Holladay	Suzanne Aigen	Frederick Korz
Mina Weiner	Marcelle R. Joseph	Annetta Alexandridis	Alise Kreditor and Jeffrey Englander
Malcolm K. Whyte	J. R. K. Kantor	Richard and Maryanne Banks	Carolyn Lange
Claire Willenson	George Kennedy	Marc Bensadoun and Cristina Hawes-Bensadoun	Karen Lazan
Sharon and Kenneth Wilson	Edith Kubicek	Susan Bernholdt	Bernard MacCabe
Cynthia Young	Jonathan and Julie Kukk	Kenneth Best	Nancy and Joel Malina
Gifts \$500 to \$999	Barbara Weissman Lewis and Bertram Lewis	Dr. Terri Binder	Richard and Carol Marks
Jerome and Enid Alpern	Thomas Marchitto	Lauren Robinson Blas and Victor Blas	Nancy Cooke McAfee
Paul and Helen Rabinowitz Anbinder	Oscar Mayer	Richard Blashka	Stella McCoy
Alice Katz Berglas	Alyson McCance	Elisabeth Boas and Art Spitzer	Pamela Meyers
Laurie Berke-Weiss and Brian Berke	William and Sandra Meyer	Ellen Breitman and Brien Amspoker	Jeffrey Nemerovski
Mary Berkelman and Maury Tigner	Leslie and Michael Obus	Frederick and Joan Buhrendorf	Barbara and Jerome Nosanchuk
Lois and William Black	Timothy O'Donnell	Diane Butler	Kira Pritchard
Judith Bloom	Suzanne and Kresimir Penavic	Nancy and Edward Butler	Dr. Sreedar Venkata Raja
Sandra Schroeder and Jeff Bricker	Nancy Roistacher and Wayne Merkelson		Wylie Rechler
	Patricia and David Ross		Eric Rosenblum
			Debbie Rothman
			James Sagalyn
			Carol Scheele

Members and special gifts

Diane Shakin and Nicholas Klein	Dr. Alice Brown	Don and Lynda Deprez	Peter Guterl
David and Nancy Simpson	Frederick and Joan Buhrendorf	Jamison Desantis	Candida Haasch
Deborah and Peter Smith	Linda and Corydon Byard	Richard and Delores Dick	Suzanne and Neal Haber
Jeffrey and Gail Stone	Guy and Lucie Campbell	Nancy and Mike Dickinson	Carol Sue Hai
Walter Swearingen	Jeffrey Carowitz	Linda Docherty	Helen and Christian Haller
Dr. Robert Sze	Neil and Karen Chafetz	Robin Dubovi	Julie and Randy Hecht
Douglas Tabish	Liz Champagne	Nathan-sid Dusaban	Lynne Henry
Roberta Tarbell and Karl Miller	Cynthia Chase and Jonathan Culler	Jean Emery	Adria Hillman
Evan Willenson	Julie Chu	Elizabeth Emrich-Rougé	Susan and Joe Hine
Donald C. Woo	Steven Chuey	Barbara Engelson and Marc Klee	Matt Hints
Julie Zimmerman and Adam Ratner	Peter and Ana Clark	Marshall Etra	Mikey Hearne Hinsta
	Patricia Clark	Brian Ettelman	Carol Hockett
Gifts \$100 to \$249	Deborah Cluff	Kelly Fast	Susana and Leslie Honig
Louis Adler	Betty Cohen and Darren Leeds	Howard and Rosalind Feinstein	Chu-Ren Huang and Kathleen Ahrens
Zoe and Robert Aicher	Linda Cohen	Susan Felleman and Peter Chametzky	Wendy Jennis
Michael and Sandra Alpert	Lynford Collins	Vivian and Gary Fields	Judy Jensvold and Harry Shaw
Barbara Andersen and Andrew Clark	David Colucci	Susan Birnbaum Fisher and David Fisher	Alfred Johnson
Thaddeus Antos	Lynne and Matt Conway	John Fisher	Gary Johnson
Scott Aronson	Carolyn Cooper	Frances Foehrkolb, Jr.	Clara-Ann Joyce
Dr. Michael J. Baccoli	Maile Cowell	Rolf and Nancy Frantz	Stephen and Judith Kaplan
Diane Baker	Jennifer Cresswell	Renee and Jack Freed	David Kapson
Colleen and Andrew Barry	David Crowley	Heidi Friedrich	Katherine and Steven Kaufman
Rowland Bates	Christopher Csikszentmihalyi	Victoria Gao	Ruth Keene
Carolyn and Steven Bell	Mary Ellen Cummings	David Gersh	Laura Kelley
Dr. A. LeGrace G. Benson	Sandra and Stephen Cushman	Jane Frommer Gertler and David Gertler	Suzanne and Lorne Kerr
Mary Berens and Paul Feeny	Jane Cytryn	Tanya Egan Gibson and Joshua Gibson	Linda Keshishoglou
Toni and Bruce Berger	Raymond Dalton	Marjorie Glazer	Samantha Kielbania
Dr. Michael Berkwits	Diana Daniels	Amy and Aaron Godert	Kumi Korf
Kimberly Blakemore	Jill Davies	Ruth and Peter Goodstein	Frederick Korz
Carrie Bodner	Frohman Davis	Ann Goodwin and Norman Krause	Alan Koslin
Verlaine Boyd	Christine Del Favero	Ellen Granger	Muriel and Leon Kuhs
Boynton Middle School	Dr. Mary Anna Denman		Paula Laholt
Nancy and Eugene Brandon			Claudia Lazzaro
Henra Briskin			

Members and special gifts

Audreylee and James Leavitt	Robert and Mary Margaret Morse	Jennifer and David Ryan	Natalie Teich
Aimee Lehmann	Roberta Moudry	Richard Saalfeld	Nicole Tinglof
Victoria Leidner	Frances Myers	Ahren and Barbara Sadoff	James Tomkins
Clifton Leonhardt	Kenneth Myers	Takashi Sakazume	Alex Tran and Wanda Ng
Mimi and Leonard Levine	Alan Newhouse	Samuel Salkin	Jill and Donald Treadwell
Paul Levine	Dr. Peter Nieh	Samuel and Kathryn Salus	David Turner
Alan Levy	Matthew Nowick	Robert Sanders	Alexandra Tursi
Judith Richter Levy	Catheryn Obern and Richard Robinson	Sara Schastok	Daniel Villegas Cruz
Ayanna Lewis-Gruss	Stuart and Carol Ockman	Sandra Schlachter and William Chang	Patricia Barker von Reyn
Janet Lieberman	William and Mary Palmer	Peter Schlessel	Julie Walker
David Linde	Jennifer and Salvatore Parlatore	Heather Schroeder	Robert Walker
Julie Lipsius and Steve Riskin	Banoo and Jeevak Parpia	Shannon Schroeder	Sarah Weiner
Shen Liu and Ming Zhang	David Parr	Dr. Susan Scott	Aviva Weintraub
Beth Lobel	Harry and Jill Petchesky	Vincent Shanley	Nancy and Andrew Weislogel
Dr. Sari Locker	Charles Peterson	Melissa Shapiro	Juliet Rothschild Weissman
Harriet and Howard London	Steven Pond	Eunice Shatzman	Laurie and Eric Wenger
Christopher Loomis	Linda Popejoy and Seth Speyer	Paul Sheridan	Gordon Wenneker
Tami and Peter Magnus	Kira Pritchard	Arthur and Charlotte Shull	Juliana Whitmore and Peter Wilson
Alexandra Marx	Julie Raskin	Arnold Siegel and Susan Futterman	Elizabeth and George Wiggans
Mark and Kathy Mayrsohn	Joan Ratner	James Siena	Beth Willensky
Carolyn McDaniel and Michael Kotlikoff	Bailey Regan	Marlene Siff	Patricia Williams
Sheila McEnery	Alyssa Reiner	Stacey and Jeffrey Silberzweig	Dr. Albert Wu
Mary Lu and Philip McPheron	Dr. Carlton Resnick	Rebecca Simon	Robert Wulf
Ann-Marie Meulendyke and Charles Vaughan	Carmen Reynolds	David Soderquist	Jenny Yan and Jasper Jiang
Dr. Richard Michelman	Arlene Richman	Laurel Southard	Jay Yedwab
Dr. Donald Milsten	Allison and Michael Riley	Dr. Matthew W. T. Spencer	Rivalyn Zweig
Risa Mish and John Lauricella	Gloria Roberts	Cara Starke	
Dr. Barbara Mitnick	Elise and Matthew Robinson	Lisa Stern and Robert Rombro	
Koji Morihiro	Margaret and Frank Robinson	Dr. Clifford Straehley III	
Michele Morisy	Gemma Rodrigues	Martin Strauss	
Dr. G. Robert Morris	Terry Rosen	Stephanie Sweda	
	Andrew Rosenberg	Peter Taft	
		Sara Tam	

Members and special gifts

Memorial gifts

In memory of
Alfred Gray and
Anne Beale Parmelee,
Johanna Keller and
Charles Martin

In memory of
Frederick W. and
Virginia Korz,
Frederick M. Korz

In memory of
Seymour Robert Askin Jr.
and Helen-Mae Askin,
Nancy and Peter Askin

In memory of
Seth Matthew Willenson,
Jeffrey Nemerovski
Nicole Tinglof
Kevin Goetz
Mark Pogachefsky
Peter Schlessel
David Linde
Gary Rubin
Scott Aronson
June Pittleman
Carolyn Cooper
Steven Pond
Craig Snider
Rick Harrison
Alyson McCance
Martin Strauss

In memory of
Seth Matthew Willenson,
Claire Willenson

In memory of
Seth Matthew Willenson,
Evan Taylor Willenson

In memory of
Warren and Virginia Korz,
Frederick M. Korz

In memory of
Lila and Morton Jay Savada,
Elias Savada

In memory of
Janet Weiner,
Michelle and
George Weiner

In memory of
Dorothy Reddington,
Stephanie and
Eric Bosworth

In memory of
Dee Emrich,
Elizabeth Emrich-Rougé

In memory of
Kathy Tune,
Larry Tune

In memory of
Yervant Terzian,
Ann-Marie Meulendyke
and Charles Vaughan

In memory of
Judith Weinberg Weidenthal,
Daniel Weidenthal

In memory of
Sylvia and Irwin Jennis,
Wendy Jennis

In memory of
Isaac Kramnick,
Irene Christy

In memory of
Marjory Beth Martin,
Judith Motzkin

In memory of
Jack L. Squier,
Stuart Lee Carter

In memory of
George S. Lunge,
Katherine Stifel

In memory of
Martha Lawson Morse,
Robert and
Mary Margaret Morse

In memory of
Isaac Kramnick,
Nancy Meinig

In memory of
Freeman Reider,
Robert James Pavlenco

In memory of
Bernard Rosen,
Howard Rosen

In memory of
Jan Scott Rothman,
Debbie Rothman

In memory of
Jack Abrams,
Johathan Abrams

Tribute gifts

In honor of
Andrew Weislogel,
Sandy and Glenn
Galbreath

In honor of
Cathy R. Klimaszewski,
Younghee Kim-Wait

In honor of
Marlene Siff,
Victoria Leidner

In honor of
Guy Trevelyn Warfield III,
Lucas Veit Warfield

In honor of
Evalyn Edwards Milman and
Stephen Milman,
Allison and Mike Riley

In honor of
James Boyle,
Lynne Henry

In honor of
Marcia Jacobson,
Daniel R. Schwarz

In honor of
Emily Nicole Muniz,
Justin Kantoff

In honor of
Nancy Green,
Susette Newberry

In honor of
Nancy Green,
David and Michelle Howlett

In honor of
Martie W. Young,
Nancy and Eugene
Brandon

Members and special gifts

The Cayuga Society

Anonymous donors
Laura[†] and John[†] Almquist
William Bellamy
Madeleine Miller Bennett
Alice J. Brown
Elliot and Karin Cattarulla
Kathleen Cavanaugh
Christine Del Favero
Martha Eustis
Melinda Everitt
Edward A. Fox
Jeffrey I. Frey
Peter Galderisi
Bradley and Mary Grainger
Marcia Jacobson and
Daniel R. Schwarz
Edith Kubicek
Elizabeth Horowitz Lea
Paul Burton Levine
Virginia and Jon Lindseth
Dorothy Litwin
Robert L. Marcus
A. Stratton McAllister
Philip E. McCarthy II
Joseph M. Ostrow
Roland S. Philip
Nelson Schaenen Jr.
Charles and Virginia Snitow[†]
Irene Lazarus Soskin
Patricia and James D. Stocker
Phyllis Tuddenham[†]
Joyce W. Underberg
William C. Wells
Sally Williams
Margot Lurie Zimmerman

The Cayuga Society honors those who have made planned gifts to the Museum.

For information on making a planned gift and becoming a Cornell Cayuga Society Member, or in the event that your planned gift intentions have changed, please contact Courtney Campbell, Director of Development, at ccn44@cornell.edu.

[†] deceased

Named endowment funds

The following individuals, families, and organizations are acknowledged for their named endowment funds that provide an ongoing source of income for the Johnson's operation, staff, exhibitions, collection, and programs.

Anonymous

Professor and Mrs. M. H. Abrams Purchase Fund

Jan Abrams Exhibition Endowment

Harriett Ames Exhibition Endowment

Associate Director and Harriett Ames Charitable Trust Curator of Education

Steven Ames Challenge Exhibition Endowment

Steven Ames Mellon Endowment

Robert J. Appel Exhibition Endowment

Art Acquisition Endowment

Seymour R. Askin, Jr., Curatorship for Earlier European and American Art

Nancy Horton Bartels Endowment for Art Acquisitions

William and Isabel Berley Director's Discretionary Fund

John Burris Art Acquisition Endowment

Alison C. Cheng Internship in Photography

Maria R. Cox and Donald M. Cox Museum Director's Discretionary Fund

Maria R. Cox and Donald M. Cox Exhibition Endowment

Gary and Ellen Davis Curator of Photography

Deborah Goodman Davis and Gerald R. Davis Fund for the Acquisition of Works on Paper

Muriel Dreiling Asian Art Internship

Jennifer, Gale, and Ira Drukier Fund for Art Acquisitions

Gale and Ira Drukier Curatorship of European and American Art, Prints & Drawings, 1800–1945

Gale and Ira Drukier Endowment*

Nancy and Stephen Einhorn Internship

Truman W. Eustis III Print Endowment

Mary Hyde Field Endowment

Findlay Family Lecture in American Art

Ruth Parcels Foote Fund

Elizabeth Miller Francis Fund

Marilyn and Lawrence Friedland Art Acquisition Fund

Meyer A. and Karen Charal Gross Internship

Alan and Betsey Harris Exhibition Endowment

Professor John A. Hartell Internship

Hartell-Cattarulla Endowment for Exhibitions

Hintsa Family Manager of School and Family Programs

June W. Holt '47 and Leon C. Holt, Jr. Education Endowment

June W. Holt '47 and Leon C. Holt, Jr. Endowed Internship

Kenneth and Jill Iscol Art Purchase Endowment

Johnson General Operating Endowment

Johnson Museum Campaign Endowment

H. F. Johnson Acquisition Endowment

Lee C. Lee Endowment for East Asian Art

Lee C. Lee Asian Art Endowment

Litwin OMNI Endowment

Lurcy Lecture Endowment

Lynch Coordinator for Academic Programs

Sherry Vogel Mallin and Joel Mallin Museum Director's Discretionary Fund

Joel and Sherry Mallin Endowment

Grace Moak Meisel Memorial Endowment

Mellon Foundation Matching Grant

The Edward Arthur Metzger Fund

Named endowment funds

The following individuals, families, and organizations are acknowledged for their named endowment funds that provide an ongoing source of income for the Johnson's operation, staff, exhibitions, collection, and programs.

Evalyn Edwards Milman '60 and Stephen E. Milman
'58 Fund for the Museum's K-12 Education Program

Evalyn Edwards Milman '60 and Stephen E. Milman
'58 Acquisition Fund

Rebecca and James Morgan Garden Fund

Museum Exhibition Endowment

Museum Education Program Fund

Museum Artist-in-Residence Endowment

National Endowment for the Arts Endowment

New Wing Operations Endowment

Warner L. Overton Endowments

Dorothy D. Park Estate

Joel and Joan Picket National Endowment for the
Arts Exhibition Endowment

Frank and Margaret Robinson Prints, Drawings and
Photographs Endowment

Rockwell Art Acquisition Endowment

George and Mary Rockwell Endowments

Richard J. Schwartz Directorship

Richard J. Schwartz Exhibition Endowment

Robert and Kazuko Smith Purchase Endowment

David M. Solinger Endowment

Louise C. (Bruce L.) Stetter Endowment

Judith H. Stoikov Curator of Asian Art

Dr. Judith Stoikov Lecture Series in Asian Art

Richard Sukenik '59 Fund for Photography

Tanner Family Purchase Fund

Treadway Museum Collection Fund

Margaret H. and Charles E. Treman, Jr.
Acquisition Fund

Deborah and Michael Troner M.D. '64
Acquisition Fund

Genevieve M. Tucker Art and Education Internship

William J. and Phyllis Stapley Tuddenham Fund

Jarret F. and Younghee Kim-Wait Fund for
Contemporary Islamic and Middle Eastern Arts

Jarret F. and Younghee Kim-Wait Fund for
Korean Arts

A. D. White Director's Discretionary Fund

Ernest I. White Endowment

Stephanie L. Wiles Acquisition Fund

Annie Wong and Calvin Cheng Internship for
Chinese Art

Martie Young Asian Art Internship

HERBERT F. JOHNSON

MUSEUM OF ART

COVER

The Deborah Goodman Davis and
Gerald Davis Study Gallery, Spring 2022

PHOTOGRAPHY

David O. Brown/Johnson Museum

Simone Gaensheimer (*page 23*)

Herbert F. Johnson Museum of Art
Cornell University
114 Central Avenue
Ithaca, NY 14853
607-255-6464
museum.cornell.edu



Elizabeth S. Yearsley, the Museum's first Post-Baccalaureate Fellow in Pre-K-12 Museum Education, brought masks from across cultures to an outreach program at Newfield Public Library, October 2021.

© 2026 Cornell University

*The Johnson Museum is grateful to the
New York State Council on the Arts for
general operating support.*

